



Sydney Met

INTERNATIONAL STUDENT GUIDE 2025



EDUCATION FOR CHANGE

CRICOS Provider Code 03906M

sydneymet.edu.au

CONTENTS



Message from the CEO	3
About Us	4
The Sydney Met Advantage	6
About Sydney Australia	7
Bachelor of Social Work	8
Bachelor of Information Technology	10
Bachelor of Business (Entrepreneurship)	12
Undergraduate Certificates	14
Master of Social Work (MSW)	16
- Graduate Diploma in Human and Community Services	
- Graduate Certificate in Human and Community Services	
Master of Information Technology (MIT)	18
- Graduate Diploma in Information Technology	
- Graduate Certificate in Information Technology	
Master of Business Administration (MBA)	20
- Graduate Diploma in Business Administration	
- Graduate Certificate in Business Administration	
Course Fees and Entry Requirements	22



SYDNEY MET 2025 ACADEMIC KEY DATES

TRIMESTER 1

Orientation day:	29 January
Term stars:	3 February
Term ends:	24 April

TRIMESTER 2

Orientation day:	21 May
Term stars:	26 May
Term ends:	15 August

TRIMESTER 3

Orientation day:	10 September
Term stars:	15 September
Term ends:	5 December



Acknowledgment of Country

We acknowledge, recognise and respect the elders, families and forebears of the Gadigal people of the Eora Nation who are the traditional owners of the land where Sydney Met is located.



**PROFESSOR
ROBIN KRAMAR**

Chief Executive Officer (CEO)
Sydney Met

Welcome to Sydney Metropolitan Institute of Technology,
Sydney Met for short.

Sydney Met is a leading private higher education provider in Australia, distinguished by its vision for socially equitable and culturally responsive education. Sydney Met provides a transformational educational experience to inspire and equip the new generation of students from around the world. At Sydney Met, we embody a student-centred approach that requires a deep understanding of students' cultural background. This means providing a tailored educational experience that understands their values, cultural differences, assumptions and future plans. This is because we want to make sure students are engaged with their educational experience and outcomes, developing their thinking, skills and knowledge to help them excel in whichever path they choose.

Our motto of 'Education for Change', reflects our belief that education is key to seeing social change for the better. This conviction has inspired Sydney Met's three goals: academic quality, equitable practice, and social impact.

We take *academic quality* seriously. We maintain high student standards both at enrollment and throughout the course. We are selective in staff appointments and generous in professional development. Our student-centred, hands-on approach to learning ensures that the Sydney Met experience produces a high calibre graduate, one who can attack their profession with confidence and achieve exceptional results.

We are committed to *equitable practice*. This means being inclusive for all cultures by recognising the value of diversity, including the strengths and uniqueness of each person's background. We aspire to be an exemplar of equitable opportunities and support for all who work and study at Sydney Met.

We aim to produce graduates who are passionate about making positive *social impact*. Our motto, Education for Change, reflects Sydney Met's commitment to educating students who can make a difference. We anticipate that our graduates and alumni will be a spark for social change and innovative ideas that result in social and economic prosperity to their communities. The level of critical thinking and knowledge attainment we seek to impart on to our students aims to allow them to influence and shape debates on social change both in Australia and globally.

I look forward to welcoming you to Sydney Met and sharing your educational journey towards an exciting future.

OUR GOALS

Quality education,
equal opportunities
for all students,
and social impact.

OUR MOTTO

Education
for Change



ABOUT US

Sydney Metropolitan Institute of Technology (Sydney Met) is a leading higher education institute in Australia that responds to the need for a new culture in Australian higher education. At Sydney Met, students are not just numbers in our system. We recognise that each student has unlimited potential to contribute towards positive change and thus we place students at the centre of everything we do. As such, each student is provided with a unique, practical skill building, culturally flexible and socially committed learning experience.

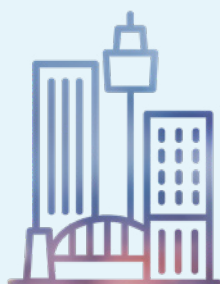
Sydney Met offers Bachelor and Master degrees in Social Work, Information Technology and Business (Entrepreneurship). All our courses are accredited by the Australian higher education regulator, Tertiary Education Quality and Standards Agency (TEQSA), and registered with the Commonwealth Register of Institutions and Courses for Overseas Students (CRICOS).



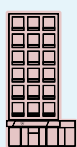
LOCATION

PROVIDER ID PRV14280

CRICOS PROVIDER CODE 03906M



The campus is near Town Hall Station in the Sydney CBD, and is easily accessible from around Sydney. In fact our campus is in the heart of Sydney city, only a few-minutes walk from train, light-rail and bus stations, meaning you will have no problem coming to and leaving the campus.



• 3 minutes



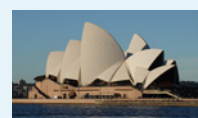
• 5 minutes



• 20 minutes



• 25 minutes



SYDNEY
MET

QUEEN VICTORIA
BUILDING

TOWN HALL
STATION

SYDNEY
HARBOUR BRIDGE

SYDNEY
OPERA HOUSE



MESSAGE FROM EXECUTIVE DEAN



Welcome to Sydney Metropolitan Institute of Technology ('Sydney Met') where we are dedicated to academic excellence and to preparing future professionals for careers in Social Work, Information Technology, and Business.

PROFESSOR LYNNE HARRIS

Executive Dean | Sydney Met

HER MOTTO

Your Future is Our Focus

At Sydney Met, we understand education as a transformative journey that we take with each of our students. We offer a rigorous and thoughtfully designed curriculum, grounded in theoretical knowledge and practical application. Our programs are research-informed, culturally engaged, and shaped by current industry directions to ensure that our graduates are equipped to adapt and succeed in a rapidly changing world. Our faculty bring their real-world expertise into the classroom to foster a learning environment where critical inquiry, independent thought, and intellectual curiosity are highly valued.

Sydney Met is a diverse and inclusive community where students from varied backgrounds come together to engage with their studies and contribute to the broader intellectual and professional landscape. We support your academic journey with small class sizes, a collaborative learning atmosphere and high quality facilities. We provide you with leadership opportunities and meaningful industry connections to enhance your professional readiness.

As you embark on the next phase of your academic journey we look forward to guiding you to achieve your aspirations. At Sydney Met your future is our focus.

SYDNEY MET focuses on socially responsible, culturally engaged and high quality education, which sets us apart from other providers. Sydney Met values diversity and aims to help students develop their personal and professional skills, while deepening their understanding of the world. We foster critical thinking, creativity and excellence through a variety of unique opportunities for students to develop their characters and deepen their knowledge.

VISION

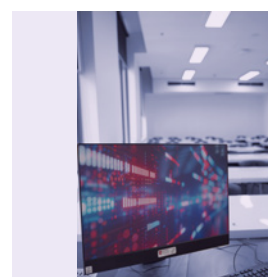
We want to change lives and produce graduates who engage deeply with their education and become agents of social change and innovation whether it be in Social Work, IT or Business.

GOALS

Sydney Met has three interconnected strategic goals: Academic Quality, Equitable Practice and Social Impact, summed up in its motto, Education for Change.

MISSION

We aim to deliver culturally appropriate and engaged education for students so that they become competent to function as professionals in real world settings. Sydney Met works together with its students, graduates, educators and stakeholders to translate the agenda of 'Education for Change' and advance actions for progressive social change within diverse communities in Australia, the Asia Pacific and the world.





THE SYDNEY MET ADVANTAGE

Sydney Met offers a unique and innovative higher education experience to students from around the world. Sydney Met aspires to be known for its high-quality education and equitable teaching practices, which maximise social impact. We aim to produce graduates who can change the world. But to do so, we need a strong set of values to guide our decision making and that is exactly what we have.

CORE VALUES



STUDENT- CENTERED

We place students at the centre of what we do, integrating curriculum, teaching practice, learning support, pastoral care and career advice.



ACADEMIC EXCELLENCE

We strive for academic excellence. We seek to deliver culturally competent and socially responsible education, that empowers students to thrive with intellectual creativity and high ethical standards.



CREATIVITY & LEADERSHIP

We welcome new ideas from our students, staff and stakeholders in order to encourage leadership for entrepreneurial innovation and opportunities in the global context of diverse cultures.



DIVERSITY

Sydney Met's faculty, students and management value and respect people of all cultural backgrounds, and embrace cultural diversity as a key value.



INTEGRITY & OPENNESS

We encourage open discussion and constructive debate. We conduct ourselves with honesty, openness and integrity. We exercise candour with our stakeholders.



EQUITY

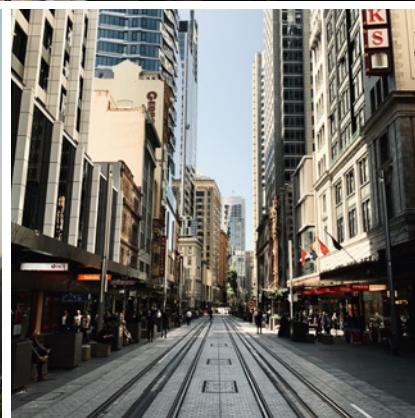
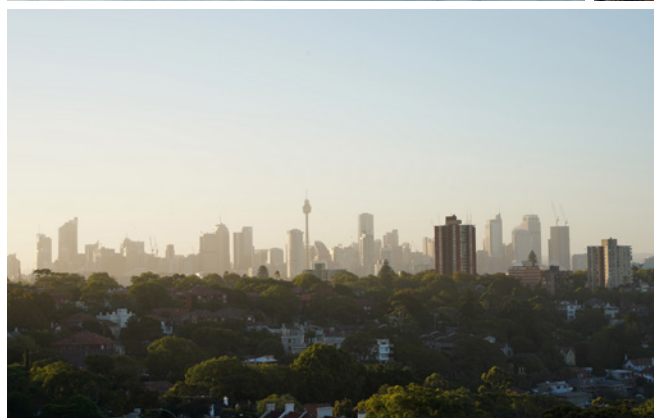
Each student has unique talents and a unique background which will allow them to contribute within Sydney Met and beyond. We strive to create an inclusive and supportive community in which the needs of each student are considered and all have a fair chance to succeed. We also promote equity and justice in the wider world in our commitment to disadvantaged and marginalised communities.



PARTNERSHIP

We partner with communities, businesses, governments and educational institutions in Australia and internationally who share our ethos, with the vision of achieving our strategic goal of producing graduates who can bring positive social impacts.

ABOUT SYDNEY AUSTRALIA

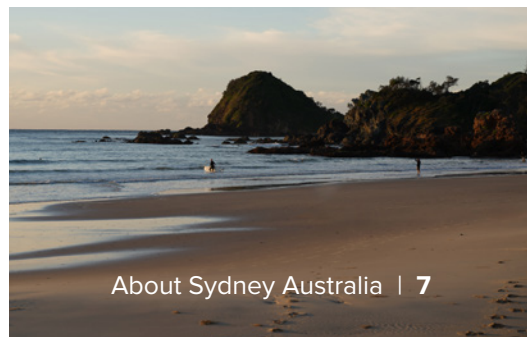


Australia is an incredible country with so much to offer international students. From its stunning landscapes to its vibrant cities, Australia is a unique place to study and explore. Its open, multicultural society makes Australia a welcoming and exciting destination for students from all part of the world. For international students, Sydney is a great place to study. With its world-class education system, Sydney is an ideal place to pursue higher education.

Sydney is also a great place to explore. Known for its café and restaurant culture, Sydney offers students an exciting social life. From its iconic landmarks, like the Sydney Opera House and the Harbour Bridge, to its many parks, waterways and beaches, there is something for everyone in Sydney. Nearby national parks and world-famous Blue Mountains offer pristine nature experiences for everyone.



For those who want to explore further, Australia is the perfect place. From the Great Barrier Reef to the Outback, Australia is home to some of the world's most stunning landscapes. Whether you're looking for a relaxing beach holiday, inspiring scenery or an adventure in the wilderness, Australia has something for everyone. With its diverse population, Australia is home to a variety of cultures, from Indigenous Australians to immigrants from all over the world. This makes it a great place to learn about different cultures and make new friends. Overall, Australia is an incredible place to study and explore.





CRICOS 111670E

BACHELOR OF SOCIAL WORK

Course Overview

*This degree is
accredited by:*



With the rising awareness of issues around mental health, well-being, inequality and disasters, social workers have become an increasingly valued part of society. In these challenging times, social workers are more than ever in demand as providers of services, support, care, recovery and resilience.

Students will be well placed to add significant social, cultural and economic value to society through critical activities in social work such as the development of charities and Non-governmental organisations (NGOs) and advocating for policies and practices that encourage the fair allocation of resources. Integrated field education is a core component of the BSW course, involving 1,000 hours of experience in work placements.

Career Opportunities

- Social Worker
- Child Protection Officer
- Case Manager
- Juvenile Justice Officer
- Family Counselor
- Child and Family Practitioner
- Community Development Worker
- Mental Health Practitioner

Study Options



Normal Mode Full-time



Part-time
(Only for Australian local students)

BACHELOR OF SOCIAL WORK (BSW)

Course Highlights

Includes 1000 hours of field education and a Capstone Unit where students get real world experience.

Focusing on high student satisfaction rates and learning outcomes, reflected by developing the experiential and critical thinking competence in students that enables them to translate exciting ideas into culturally engaged actions.

Graduates either take the challenge of becoming socially responsible professionals, or proactively engage in the expanding field of social work careers.

An exciting and AASW provisionally accredited undergraduate course targeted at individuals who want to pursue socially responsive and responsible directions in social work practice.

Face-to-face and blended teaching in the heart of Sydney city.

Course Features

The BSW includes:

21 core units of 6 credits points each (126 credit points)

3 core Field Education Units (48 credit points) + 3 elective units of 6 credit points each (18 credit points)

Total credit points for the BSW = 192

Course Units



**21 x 6CP CORE UNITS, 3 x 6CP ELECTIVE UNITS
+ 3 FIELD EDUCATION UNITS (48 CP)**

- **SWK101** So you want to be a Social Worker?
- **SWK102** Being a Critical Social Work Practitioner
- **SWK103** First Nations Peoples and Decolonising Social Work
- **SWK104** Sociological Foundations for Social Work
- **SWK105** Psychology and Human Behaviour in Social Work
- **SWK106** Professional Practice Skills
- **SWK107** Groups, Teams, and Human Service Organisations
- **SWK108** Research for Social Work
- **SWK201** Theory and Practice -1: Mental Health and Wellbeing
- **SWK202** Theory and Practice-2: Social Justice, Human Rights and Advocacy
- **SWK203** Theory and Practice-3: Working with Children and Families
- **SWK204** Across Diversity: From Theory to Practice
- **SWK205** Social and Legal Context of Social Work
- **SWK206** Social Work Theory and Practice-4: Ethics, Integrity, and Professionalism
- **SWK207** Health, Wellbeing and Lifespan of Individuals
- **SWK302** Advanced Practice Skills: Counselling, Casework and Case Management
- **SWK303** Social Work with Communities
- **SWK305** Structural and Family Violence
- **SWK307** Leadership in Social Work Practice
- **SWK311** Social Work Field Education 1 (12CP)
- **SWK401** Project Management for Social Workers
- **SWK402** Social Work Capstone
- **SWK411** Social Work Field Education 2 (18CP)
- **SWK412** Social Work Field Education 3 (18CP)

Elective Units (Only **THREE** to be completed)

- **SWK301** Disability and Ageing in Social Work
- **SWK304** Environmental Justice and Community Resilience
- **SWK306** Research for Social Work: Policies and Practice
- **BUS204** People and Culture
- **ENT301** Risk Management
- **MGT203** Sustainable Development and CSR
- **SWK413** Unspecified Elective

Field Education (1,000 hours)

- **SWK311** Social Work Field Education 1 (12CP; 250 hours)
- **SWK411** Social Work Field Education 2 (18CP; 375 hours)
- **SWK412** Social Work Field Education 3 (18CP; 375 hours)



CRICOS 111669J

BACHELOR OF INFORMATION TECHNOLOGY



Course Overview

The Bachelor of Information Technology (BIT) at Sydney Met will build a student's knowledge and skills in the theoretical, technical and practical aspects of information technology.

Our BIT course provides strong foundations required to excel within the IT field. With this course, you can expect to develop your critical thinking, creativity and innovation which will allow you to become a contemporary problem solver ready to contribute to the dynamic in-demand field of IT.

Major in



Cyber Security



Information Systems

Career Opportunities

- Security Consultant
- Business Analyst
- Information Systems Manager
- Database Administrator
- IT Consultant
- System Administrator
- Network Administrator
- Information System Analyst

Study Options



Normal Mode Full-time



Accelerated Mode Full-time



Part-time
(Only for Australian local students)

BACHELOR OF INFORMATION TECHNOLOGY (BIT)

Course Highlights

Includes 2 x core Capstone units in each major where students can get real world experience.

Focusing on high student satisfaction rates and learning outcomes, reflected by developing critical thinking competence in students that enables them to translate exciting ideas into innovative actions.

Graduates either take the challenge of becoming socially responsible IT professionals, or proactively engage in the expanding field of IT careers.

An exciting and industry engaged undergraduate course targeted at individuals who want to pursue creative and innovative directions in Information Technology.

Face-to-face and blended teaching in the heart of Sydney city.

Course Features

Study 24 Units (144 Credit Points)

12 core units (Compulsory)

8 Major core units (Choose Cyber Security OR Information Systems major)

4 elective units

1 Unit = 6 Credit Points

1 Unit = 14 weeks (12 class weeks, 1 study week, 1 exam week)

Two Majors: Cyber Security or Information Systems

Course Units



CORE UNITS x 12

- **ICT101** Introduction to Information Technology
- **ICT102** Foundations of Computer Programming
- **ICT103** Computer Security and Network Fundamentals
- **ICT104** Introduction to Database Design and Management
- **ICT105** IT Project Management
- **ICT106** Ethics and Professional Practices in IT
- **ICT107** Mobile App and Web Development
- **ICT108** Artificial Intelligence for Engineer
- **ICT109** Foundations of Information Systems and Practice
- **BUS101** Communication for Change
- **BUS213** Research Methods
- **ENT202** Leadership and Teamwork



MAJOR IN CYBER SECURITY x 8 UNITS*

- **ICT201** Foundations of Cyber Security
- **ICT202** Data Privacy and Information Security (Pre-req. ICT103)
- **ICT203** Wireless Networks and Security (Pre-req. ICT103)
- **ICT301** Cybercrime (Pre-req. ICT202)
- **ICT302** Digital Forensics
- **ICT303** Advanced Security Operations and Vulnerability Analysis (Pre-req. ICT202 and ICT 302)
- **ICT310** Cyber Security Management in Practice-I (Capstone 1) (Pre-req ICT303)
- **ICT311** Cyber Security Management in Practice- II (Capstone 2) (Pre-req ICT310)



MAJOR IN INFORMATION SYSTEMS x 8 UNITS*

- **ICT204** Advanced Database Systems (Pre-req. ICT104)
- **ICT205** Systems Analysis and Design (Pre-req. ICT104)
- **ICT206** Cloud Computing and Business Systems
- **ICT304** Enterprise Network Management (Pre-req. ICT204)
- **ICT305** Systems Analytics and Business Intelligence
- **ICT306** Information Systems Deployment and Management (Pre-req. ICT204 and ICT305)
- **ICT320** Information Systems Project-I (Capstone 1) (Pre-req. ICT306)
- **ICT321** Information Systems Project-II (Capstone 2) (Pre-req. ICT320)

Elective Units

- **BUS202** Management Principles and Systems
- **BUS206** Digital Business and E-commerce
- **BUS207** Research Methods and Data Analysis
- **MGT203** Sustainable Development and CSR
- **BUS205** Creativity and Innovation
- **ICT001-ICT004** Unspecified Electives 1-4

*All units in each major may be taken as electives in the other major, subject to prerequisites, if any.



CRICOS 105421F

BACHELOR OF BUSINESS (ENTREPRENEURSHIP)



Course Overview

Major in



Accounting

*The accounting
major in this degree
is accredited by:*



Management



Tourism, Hospitality
and Event Management

Be prepared to take on the world with creativity, conviction and bulletproof mindset. Through this course, we impart solid knowledge combined with practical skills, to develop you as a high impact entrepreneur, business leader or successful team player. This degree could be just the trigger for the transformational future that awaits you. The overarching purpose of the course is to produce graduates who can take the challenge of becoming socially responsible entrepreneurs, or taking part in the expanding field of entrepreneurship-oriented business careers.

Career Opportunities

- Business Consultant
- Professional Accountant
- Financial Advisor
- Tax & Accounting Consultant
- Sales Manager
- Business Manager
- Management Consultant
- Start-up Entrepreneur

Study Options



Normal Mode Full-time



Accelerated Mode Full-time



Part-time
(Only for Australian local students)

BACHELOR OF BUSINESS (ENTREPRENEURSHIP) (BBUS)

Course Highlights

An exciting undergraduate course targeted at individuals who want to pursue creative and innovative directions in business. The accounting major is accredited with CPA/CA ANZ.

Students will gain knowledge, understanding, and practical skills in different facets of business which will equip them to function effectively in a diverse and ever changing world.

Graduates either take the challenge of becoming socially responsible entrepreneurs, or proactively engage in the expanding field of entrepreneurial business careers.

Focusing on high student satisfaction rates and learning outcomes, reflected by developing critical thinking competence in students that enables them to translate exciting ideas into innovative actions.

Includes 2 x core Capstone units where students can get real world experience.

Course Features

Study 24 Units (144 Credit Points)

16 Core Units

1 Unit = 6 Credit Points

1 Unit = 14 Weeks (12 class weeks, 1 study week, 1 exam week)

Three Majors: Accounting, Management, OR Tourism, Hospitality and Event Management and No Major Option

NO MAJOR:

Any 8 units from the 3 Majors
(Accounting, Management, or THEM)
choosing from a total 24 units

Course Units



CORE UNITS x 16

- **BUS101** Foundations of Entrepreneurship
- **BUS204** People and Culture
- **BUS103** Communication for Change
- **BUS203** Entrepreneurial Marketing
- **BUS202** Management Principles and Systems
- **BUS114** Economics for Entrepreneurs
- **BUS207** Research Methods and Data Analysis
- **BUS102** Accounting for Entrepreneurs
- **BUS206** Digital Business and E-commerce
- **BUS301** Risk Management
- **BUS205** Creativity and Innovation
- **BUS201** Business Finance and Entrepreneurship
- **BUS208** Business, Law, and Ethics
- **BUS302** Business Strategy for Entrepreneur
- **BUS317** Business Entrepreneurship Capstone A
- **BUS318** Business Entrepreneurship Capstone B



MAJOR IN ACCOUNTING: COMPLETE THE 8 UNITS BELOW

- **ACC201** Financial Accounting and Reporting
- **ACC202** Accounting Information Systems
- **ACC203** Cost and Management Accounting
- **ACC204** Taxation and Business Regulation
- **ACC301** Audit and Assurance
- **ACC302** Advanced Financial Accounting and Reporting
- **ACC303** Digital Finance
- **ACC304** Emerging Issues in Accounting



MAJOR IN MANAGEMENT: COMPLETE THE 8 UNITS BELOW

- **MGT201** Global Business Environment
- **MGT202** Performance Management and Improvement
- **MGT203** Sustainable Development and CSR
- **MGT204** Business Intelligence and Tools
- **MGT301** Project Management
- **MGT302** Sales Strategy and Skill
- **MGT303** Leadership and Change
- **MGT304** Emerging Issues in Business



MAJOR IN TOURISM, HOSPITALITY AND EVENT MANAGEMENT (THEM): COMPLETE THE 8 UNITS BELOW

- **THE201** Foundations of Tourism, Hospitality and Event Management
- **THE202** Food and Beverage Service Management
- **THE203** Marketing and Branding in THEM
- **THE204** Entrepreneurship in Tourism, Hospitality and Events
- **THE301** Project Management
- **THE302** Strategic Management in Tourism, Hospitality and Events
- **THE303** Wellness Management in THEM
- **THE304** Future of Tourism, Hospitality and Event Management

UNDERGRADUATE CERTIFICATE IN BUSINESS



Course Overview

If you are interested in exploring a new career option or updating your knowledge and skills in Business and Entrepreneurship, then an Undergraduate Certificate in Business is your best option. This is a short course, only requiring 6 months of full-time study, packed full of academic and practical knowledge, ready to build your skills as a business professional. Whether, you seek to use the skills taught in this course within your field of work, or as a segue into an undergraduate degree, you cannot do better than an undergraduate certificate in business. To qualify for the award of an Undergraduate Certificate in Business, students will need to complete the following four Units successfully, that is, 24 credit points.



CORE UNITS x 4

BUS101 Foundations of Entrepreneurship

BUS102 Accounting for Entrepreneurs

BUS103 Communication for Change

BUS114 Economics for Entrepreneurs

After completing the Undergraduate Certificate in Business you will be eligible to take out the Undergraduate Certificate in Business or continue into the Bachelor of Business (Entrepreneurship) with credit for the four units completed in the Undergraduate Certificate.

UNDERGRADUATE CERTIFICATE IN INFORMATION TECHNOLOGY



Course Overview

If you are interested in exploring a new career option or updating your knowledge and skills in Information Technology, an Undergraduate Certificate in Information Technology course can be a great option. This is a short course, only needing six-months of full-time study. To qualify for the award of an Undergraduate Certificate in Information Technology, students will need to complete the following four Units successfully, that is, 24 credit points.



CORE UNITS x 4

ICT101 Foundation of Information Systems and Practise

BUS206 Digital Business and E-Commerce

BUS103 Communication for Change

BUS205 Creativity and Innovation

After completing the Undergraduate Certificate in Information Technology you will be eligible to take out the Undergraduate Certificate in Information Technology or continue into the Bachelor of Information Technology with credit for the four units completed in the Undergraduate Certificate.



Sydney Met

SYDNEY MET MASTER PROGRAMS

Master of Social Work (MSW)

- Graduate Diploma in Human and Community Services
 - Graduate Certificate in Human and Community Services
-

Master of Information Technology (MIT)

- Graduate Diploma in Information Technology
 - Graduate Certificate in Information Technology
-

Master of Business Administration (MBA)

- Graduate Diploma in Business Administration
- Graduate Certificate in Business Administration



CRICOS 117058K

MASTER OF SOCIAL WORK

This course is currently under review with the **Australian Association of Social Workers (AASW)** for the purpose of professional accreditation. Sydney Met cannot indicate if or when professional accreditation will be achieved as this can only be determined once the accreditation process has been completed.

Eligibility for membership of the AASW requires completion of a course with provisional or full AASW accreditation and eligibility for membership of the AASW is a requirement for many jobs in social work.

For more information about AASW accreditation, please see <https://www.aasw.asn.au/education-employment/higher-education-providers/accredited-courses/>



Course Overview

Social workers are critically important providers of services, support and advocacy, especially at a time of crisis when significant changes in the broad social, political and economic contexts are occurring. Hence, educating social work graduates who are competent to offer a structural critique and understand and respond to the inequality experienced by diverse communities, especially those who are vulnerable and disadvantaged, is timely. The need for comprehensive Master of Social Work courses, that provide highly trained and skilled social work graduates, has never been greater.

The courses provide a strong base of critical and reflective thinking, combined with a drive for innovative practice and social impact. They offer students a comprehensive understanding of the important role of social work practice in achieving social change for justice, inclusion and wellbeing.

Career Opportunities

- Career Counselling
- Probation Officer
- Community Development Worker

Study Options

- 2 YEARS** Normal Mode Full-time
- 1.5 YEARS** Accelerated Mode Full-time
- 4 YEARS** Part-time
(Only for Australian local students)

MASTER OF SOCIAL WORK

Course Highlights

Includes 1000 hours of field education where students get real world experience.

Demonstrate broad and coherent knowledge in core areas of Social Work, including social justice, social development, psychosocial health and wellbeing, and counselling.

Analyse complex problems using critical thinking and inter-cultural skills, and evaluate social work practice solutions to meet the needs of individuals, groups and communities in diverse settings.

Apply knowledge, skills and values to deliver suitable social work practices for resolving personal and interpersonal problems and enhance wellbeing and development.

Communicate effectively in oral and written form, work as a productive team member, and engage proactively with the broader society in culturally competent ways with special concern for indigenous peoples.

Research, critically analyse and synthesise knowledge and values and apply reflective thinking skills to inform professional judgement and practice.

Act ethically and responsibly, showing an understanding of social work practice standards in their work.

Course Features

Study 96 Credit Points

9 Core Units (compulsory),
2 Field Education Units (compulsory)
and 1 Elective Unit

1 Unit = 6 Credit Points,
1 Field Education = 18 credit

1 Unit = 14 Weeks (12 class weeks,
1 study week, 1 exam week)

- All classes are on campus and are scheduled 5.00pm to 8.00pm.
- The campus is accessible to students from 8.30am to 9.00pm, and the on-campus library/student study area is equipped with computers.
- The online library is accessible 24/7.

Course Units



CORE UNITS x 9

- **SWK501** So You Want to Be a Social Worker
- **SWK502** Being a Critical Social Work Practitioner
- **SWK503** First Nations Peoples and Decolonising Social Work
- **SWK504** Professional Practice Skills for working with Individuals, Families and Communities
- **SWK505** Social Work Theories and Frameworks across the life cycle for Individuals, Families and Groups
- **SWK601** Policy, Law and Organisational Contexts of Social Work Practice
- **SWK602** Social Research and Communication for Social Work
- **SWK603** Structural, Child and Family Violence
- **SWK604** Social Work Practice for Mental Health and Wellbeing



Elective Units

(Only ONE unit to be completed out of 4 units)

- **SWK605** Social Work for Ageing & Disability
- **SWK606** Community Development and Advocacy
- **SWK607** Leadership and Teamwork
- **RSC501** Research Methods

Field Education (1,000 hours)

- **SWK510** Social Work Field Education 1 (18 Credit Points)
- **SWK610** Social Work Field Education 2 (18 Credit Points)

CRICOS 117059J	GRADUATE DIPLOMA IN HUMAN AND COMMUNITY SERVICES (GDHCS)  - Students who complete the following units successfully are eligible to exit with the Graduate Diploma in Human and Community Services
<ul style="list-style-type: none"> • SWK501 So You Want to Be a Social Worker • SWK502 Being a Critical Social Work Practitioner • SWK503 First Nations Peoples and Decolonising Social Work • SWK504 Professional Practice Skills for working with Individuals, Families and Communities • SWK505 Social Work Theories and Frameworks across the life cycle for Individuals, Families and Groups • SWK604 Social Work Practice for Mental Health and Wellbeing 	
Two of the following units <ul style="list-style-type: none"> • SWK601 Policy, Law and Organisational Contexts of Social Work Practice • SWK602 Social Research and Communication for Social Work • SWK603 Structural, Child and Family Violence 	
CRICOS 117049M	GRADUATE CERTIFICATE IN HUMAN AND COMMUNITY SERVICES (GCHCS)  - Students who complete the following units successfully are eligible to exit with the Graduate Certificate in Human and Community Services:
<ul style="list-style-type: none"> • SWK501 So You Want to Be a Social Worker • SWK502 Being a Critical Social Work Practitioner • SWK503 First Nations Peoples and Decolonising Social Work 	
EITHER <ul style="list-style-type: none"> • SWK504 Professional Practice Skills for working with Individuals, Families and Communities OR • SWK505 Social Work Theories and Frameworks across the life cycle for Individuals, Families and Groups 	



CRICOS 117055B

MASTER OF INFORMATION TECHNOLOGY



Course Overview

Information technology is shaping the way we live today. Information flows are unprecedented, and so is the rise of innovative technologies and high-powered computers. Our lives, businesses and systems have become faster and more connected than ever before. The Master of Information Technology at Sydney Met will provide students with a comprehensive understanding of the role of information technology solutions in modern business. The MIT course provides a strong base of critical thinking, combined with creativity and innovation, to create contemporary problem solvers who are ready to contribute to society.

Major in



Cyber Security
and Networking



Data Science and
Information Systems

Career Opportunities

- Business Intelligence Expert
- E-Business Developer
- Database Developer
- Information Systems Manager
- IT Security Analyst
- IT Security Manager
- ICT Security Analyst
- Vulnerability Management Analyst
- IT Project Manager
- Movie Animator
- Software Architect
- Software Quality/Testing Specialist
- Systems Analyst.

Study Options



Normal Mode Full-time



Accelerated Mode Full-time



Part-time
(Only for Australian local students)

MASTER OF INFORMATION TECHNOLOGY (MIT)

Course Highlights

The Sydney Met MIT aims to prepare students for a career in IT by providing them with a strong theoretical and practical foundation in the field. This degree is designed to enable those with a bachelor's degree in IT areas to pursue their skills and knowledge in advance level that will allow them to enter as a specialist in the field of information technology. The majors of the MIT focus on important contemporary areas of information technology:

Cyber Security and Networking (CSN)

The Cyber Security and Networking major focuses on the technologies that are used to create and secure the networks that connect us. As part of this major, students will study digital forensics, network security, and cyber security technologies, among others.

Data Science and Information Systems (DSIS)

The Data Science and Information Systems major will teach a student how to organise, identify, analyse and use data to inform strategies, redefine questions and find answers that make an impact. In this major, students learn to innovate and blend data science and information systems with skills, knowledge and experience in business information technology solutions.

Course Features

Study 16 Units (96 Credit Points)

7 Core Units + 7 Major Core Units
(Choose **CSN** OR **DSIS**)
and 2 Elective Units

1 Unit = 6 Credit Points

1 Unit = 14 Weeks (12 class weeks,
1 study week, 1 exam week)

Two Majors: Cyber Security and Networking (CSN) OR Data Science and Information Systems (DSIS), and No Major Option

- All classes are on campus and are scheduled 5.00pm to 8.00pm.
- All classes are taught in computer laboratories with required software installed.
- The campus is accessible to students from 8.30am to 9.00pm, and the on-campus library/student study area is equipped with computers.
- The online library is accessible 24/7.

Course Units



CORE UNITS x 7

- **ICT501** Computer Network and Security
- **ICT502** Computer Programming
- **ICT503** Database Systems for Data Scientists
- **ICT504** Cloud Computing
- **ICT505** IT Policy, Ethics and Professional Practice in Australia
- **RSC501** Research Methods
- **BUS513** Project Management and Leadership



MAJOR IN CYBER SECURITY AND NETWORKING (CSN) 7 UNITS + 2 ELECTIVE UNITS

- **ICT601** Applied Cyber Security
- **ICT602** Digital Forensics
- **ICT603** Wireless Network and Security
- **ICT604** Cybercrime
- **ICT605** Network Security Operations and Vulnerability Analysis
- **ICT606** Artificial Intelligence for Cyber Security
- **ICT610** Capstone Project-CSN



MAJOR IN DATA SCIENCE AND INFORMATION SYSTEMS (DSIS) 7 UNITS + 2 ELECTIVE UNITS

- **ICT611** Data Analytics and Statistics
- **ICT612** Applied Data Science
- **ICT613** Advanced System Analysis and Design
- **ICT614** Enterprise Network Management
- **ICT615** Big Data
- **ICT616** Artificial Intelligence for Data Science
- **ICT620** Capstone Project-DSIS

NO MAJOR:

7 CORE UNITS + any 9 UNITS from the MIT, including at least one unit from Capstone Project-CSN / Capstone Project-DSIS / Research Project

Elective Units

- **BUS514** Leading with Creativity and Innovation
- **ICT506** Business Information Systems: a Managerial Perspective
- **RSC601** Research project
- **WIL600** Work Integrated Learning (WIL)

GRADUATE DIPLOMA IN INFORMATION TECHNOLOGY (GDIT)		
CRICOS 117056A	48 credits	Successful completion of 7 Core Units and any 1 Additional Unit offered within the MIT

GRADUATE CERTIFICATE IN INFORMATION TECHNOLOGY (GCIT)		
CRICOS 117057M	24 credits	Successful completion of 4 Core Units offered within the MIT



CRICOS 117080A

MASTER OF BUSINESS ADMINISTRATION (MBA)



Course Overview

The MBA course at Sydney Met aims to equip graduates with advanced skills for working in senior roles in public and private organizations by providing a strong theoretical and practical foundation in areas of economics, marketing, leadership, organizational behaviour, and accounting applied to management of organizations. The course aims to enable early career professionals to prepare for more senior managerial roles within their current field and supports professionals transitioning into leadership roles in new professional areas.

Major in



Professional
Accounting



Management
and Leadership

Career Opportunities

- Finance
- Management
- International Management
- Consulting
- Executive Management
- Supply Chain Management
- Healthcare Management
- Professional Accounting
- Investment Banking
- Business Consulting
- Operations Research Analysis
- Business Development Management
- General Management
- Project Management

Study Options



Normal Mode Full-time



Accelerated Mode Full-time



Part-time
(Only for Australian local students)

MASTER OF BUSINESS ADMINISTRATION (MBA)

Course Highlights

Sydney Met MBA will enable students to develop specialist skills through a choice of majors. The degree will provide flexibility as students are required to undertake core units and then choose units from the available majors, and/or electives.

There are two specialised streams within the MBA that students can take as a major. Each major requires six (Management and Leadership) or seven (Professional Accounting) core units (including one capstone).

Major 1: Professional Accounting

The Professional Accounting major focuses on accounting theories, methods, principles, and practices. Units from this major can also be taken as electives in other streams, subject to pre-requisites.

Major 2: Management and Leadership

The Management and Leadership major will enable student to learn how theories and practice of management can inspire and transform business leadership. In this major, students learn to innovate with skills, knowledge, and experience in business management solutions. Units from this major can also be taken as electives in other streams, subject to pre-requisites.

Course Features

Study 16 Units (96 Credit Points)

8 Core Units

1 Unit = 6 Credit Points

1 Unit = 14 Weeks (12 class weeks, 1 study week, 1 exam week)

Two Majors: Professional Accounting, or Management and Leadership, and No Major Option

- All classes are on campus and are scheduled 5.00pm to 8.00pm.
- The campus is accessible to students from 8.30am to 9.00pm, and the on-campus library/student study area is equipped with computers.
- The online library is accessible 24/7.

Course Units



CORE UNITS x 8

- **BUS501** Economics for Business
- **BUS502** Accounting for Strategic Decision Making
- **BUS503** Management Principles and Practice
- **BUS504** Leadership and Change
- **BUS505** Strategic Management
- **BUS506** Marketing and Consumer Behaviour
- **BUS507** Ethics, Governance and Corporate Social Responsibility
- **RSC501** Research Methods



MAJOR IN PROFESSIONAL ACCOUNTING: 7 CORE UNITS + 1 ELECTIVE UNIT*

- **BUS602** Financial Accounting and Reporting (Pre req BUS502)
- **BUS603** Managerial Accounting (Pre req BUS502)
- **BUS605** Business and Corporate Law
- **BUS606** Taxation and Business Regulation (Pre req BUS502)
- **BUS607** Capstone Project: Professional Accounting (Pre req. all Year 1 core units)
- **BUS608** Financial Management
- **ICT506** Business Information Systems: a Managerial Perspective

*Electives may be from the Management and Leadership Major (subject to pre-requisites), RSC601 Research Project or any of the additional electives.



MAJOR IN MANAGEMENT AND LEADERSHIP: 6 CORE UNITS + 2 ELECTIVE UNITS*

- **BUS608** Financial Management
- **BUS609** Human Resources Management
- **BUS610** Leading with Creativity and Innovation (Pre req BUS504)
- **BUS611** Organisational Behaviour and Structure
- **BUS612** Risk Management
- **BUS613** Capstone Project: Management & Leadership (Pre req. all Year 1 core units)

*Electives may be from the Professional Accounting Major (subject to pre-requisites), RSC601 Research Project or any of the additional electives.

NO MAJOR: 1 CORE UNIT + 7 ELECTIVE UNITS*

- **RSC601** Research Project (pre-req. all Year 1 core units)

*Electives may be from the Management and Leadership Major or the Professional Accounting Major (subject to pre-requisites), or any of the additional electives

Elective Units

- **BUS513** Project Management and Leadership
- **BUS604** Auditing & Assurance (Pre req BUS502 Accounting for Strategic Decision Making)
- **BUS614** Accounting Ethics and Governance

CRICOS
117081M

GRADUATE DIPLOMA IN BUSINESS ADMINISTRATION (GDBA)



- Students who complete the following units successfully are eligible to exit with the **Graduate Diploma in Business Administration**:

- **BUS501** Economics for Business
- **BUS502** Accounting for Strategic Decision Making
- **BUS503** Management Principles and Practice
- **BUS504** Leadership and Change
- **BUS505** Strategic Management
- **BUS506** Marketing and Consumer Behaviour
- **BUS507** Ethics, Governance and Corporate Social Responsibility
- **RSC501** Research Methods

CRICOS
117082K

GRADUATE CERTIFICATE IN BUSINESS ADMINISTRATION (GCBA)



- Students who complete the following units successfully are eligible to exit with the **Graduate Certificate in Business Administration**:

- **BUS501** Economics for Business
- **BUS502** Accounting for Strategic Decision Making
- **BUS503** Management Principles and Practice
- **BUS504** Leadership and Change

COURSE FEES

Tuition fees are based on per Credit Point enrolled
All fees are in AUD \$

COURSE	DURATION	PER TERM FEE	TOTAL COURSE FEE	INTAKE	ENGLISH REQUIREMENT
Bachelor of Social Work (BSW) @ \$466.66 / credit point	4 Years	\$11,200	\$89,600	Trimester 1 : Feb Trimester 2 : May Trimester 3 : Sep	IELTS overall 7 not less than 7 each band or equivalent
Bachelor of Information Technology (BIT) @ \$400 / credit point	3 Years	\$9,600	\$57,600	Trimester 1 : Feb Trimester 2 : May Trimester 3 : Sep	IELTS overall 6 not less than 5.5 each band or equivalent
Bachelor of Business (Entrepreneurship) (BBUS) @ \$400 / credit point	3 Years	\$9,600	\$57,600	Trimester 1 : Feb Trimester 2 : May Trimester 3 : Sep	IELTS overall 6 not less than 5.5 each band or equivalent
Master of Social Work (MSW) @ \$450 / credit point	2 Years	\$10,800	\$43,200	Trimester 1 : Feb Trimester 2 : May Trimester 3 : Sep	IELTS overall 7 not less than 7 each band or equivalent
Graduate Diploma in Human and Community Services @ \$450 / credit point	1 Year	\$10,800	\$21,600	Trimester 1 : Feb Trimester 2 : May Trimester 3 : Sep	IELTS overall 7 not less than 7 each band or equivalent
Graduate Certificate in Human and Community Services @ \$450 / credit point	6 Months	\$10,800	\$10,800	Trimester 1 : Feb Trimester 2 : May Trimester 3 : Sep	IELTS overall 7 not less than 7 each band or equivalent
Master of Information Technology (MIT) @ \$450 / credit point	2 Years	\$10,800	\$43,200	Trimester 1 : Feb Trimester 2 : May Trimester 3 : Sep	IELTS overall 6.5 not less than 6.0 each band or equivalent
Graduate Diploma in Information Technology @ \$450 / credit point	1 Year	\$10,800	\$21,600	Trimester 1 : Feb Trimester 2 : May Trimester 3 : Sep	IELTS overall 6.5 not less than 6.0 each band or equivalent
Graduate Certificate in Information Technology @ \$450 / credit point	6 Months	\$10,800	\$10,800	Trimester 1 : Feb Trimester 2 : May Trimester 3 : Sep	IELTS overall 6.5 not less than 6.0 each band or equivalent
Master of Business Administration (MBA) @ \$450 / credit point	2 Years	\$10,800	\$43,200	Trimester 1 : Feb Trimester 2 : May Trimester 3 : Sep	IELTS overall 6.5 not less than 6.0 each band or equivalent
Graduate Diploma in Business Administration @ \$450 / credit point	1 Years	\$10,800	\$21,600	Trimester 1 : Feb Trimester 2 : May Trimester 3 : Sep	IELTS overall 6.5 not less than 6.0 each band or equivalent
Graduate Certificate in Business Administration @ \$450 / credit point	6 Months	\$10,800	\$10,800	Trimester 1 : Feb Trimester 2 : May Trimester 3 : Sep	IELTS overall 6.5 not less than 6.0 each band or equivalent

General Fees & Charges

Selected general fees and charges (AUD) as applicable

• Enrolment / Admissions Fee (International students only)	\$200
• Revised eCoE Fee (International students only)	\$200
• RPL and Credit Application Fee	\$200
• Credit Transfer Re-assessment Fee	\$200
• Internal Change of Course or Change of Course Pathway, or Course Withdrawal or Course Transfer Application Fee	\$200
• Pre-Admission English Placement Test Fee	\$200
• Tuition Payment Fee - Plan Fee	\$100
• Late Tuition Fee Payment	\$200
• Re-exam, or supplementary assessment	\$100
• Student ID card replacement	\$20
• Graduation fee	\$150
• Refund Administration Charge	\$100
• Issuance of Statement of Attainment (Pre-graduation)	\$100
• Replacement Testamur (Completed)	\$50
• Replacement Completion Letter	\$50
• Replacement Official Transcript (Completed)	\$50
• Replacement Cross-Institutional Transcript	\$50
• Replacement of AHEGS Letter	\$50
• Reference Letter or Other Letter for Third Party	\$20
• Re-issuance of Study Break Letter	\$100
• Library late return fees	\$2 per day per item
• Laptop Borrowing Deposit	\$100
• Laptop Late Return Fees	\$10 per day
• Lost or Damage of Book, Laptop or Other Items	Price for replacement
• Airport pickup fee (if selected)	\$200
• Printing	10c per single sided page

* Please note that there are other fees and charges as applicable. The fees and charge may change and you are requested to check with the College to obtain the latest fees and charges.

Estimated accommodation costs per person/week:

Hostels and Guesthouses	\$90 to \$150
Shared Rental	\$95 to \$215
Homestay	\$235 to \$325
Rental	\$185 to \$440

Estimated costs of living per person/year

For student or guardians	\$29,710
For partner coming with you	\$10,394
For a child coming with you	\$4,449

The student should consider the cost of living (accommodation, meals etc.) in Australia, which is estimated by the Australian government, and can be found at <https://www.studyinaustralia.gov.au/>

Payment of Fees

Tuition fees are payable as part of enrollment in the Course six (6) weeks prior to the start of the Trimester. Fees for subsequent trimesters must be paid at least 2 weeks prior to commencement. Fees are calculated based on the number of Units.

Payment Options

- Bank Cheque
- Direct deposit / Telegraphic transfer

Overseas Student Health Cover (OSHC)

The Australian government requires international students and their dependents to have OSHC while studying in Australia. This requirement is regardless of any existing health insurance in their home country. The recommended provider of OSHC is AHM and it can be arranged when the student pays their tuition fees.

ENTRY REQUIREMENTS

ACADEMIC

For entry to the Bachelor of Social Work (BSW), Bachelor of Information Technology (BIT), Bachelor of Business (Entrepreneurship) (BBUS), and Undergraduate Certificates:

- Successful completion of Year 12 in Australia with minimum ATAR of 60, or equivalent overseas qualification, or
- Satisfactory completion of an accredited Tertiary Preparation Program or a Foundation Year Program offered by an accredited Australian Higher Education Provider that would enable students to gain entry to an Australian university; or
- Satisfactory completion of a tertiary education qualification at AQF Level 5 (Diploma) or above from an accredited Australian Higher Education Provider, or an AQF Level 5 (Diploma) or above qualification from a Registered Training Organisation (RTO) in Australia, or equivalent overseas qualification, or
- For entry to the Bachelor of Business, satisfactory completion of an Undergraduate Certificate in Business (with credit transfer), or
- For entry to the Bachelor of Information Technology, satisfactory completion of an Undergraduate Certificate in Information Technology (with credit transfer)

For entry to the Master of Social Work (MSW):

- The MSW(Q) has a minimum academic entry requirement of a bachelor's degree (AQF level 7) with at least 8 units in the social and behaviour sciences, or equivalent for international students, as required by the AASW.
- The MSW(Q) also has inherent requirements which are academic and non-academic requirements that are essential to the successful completion of a course.

For entry to the Master of Information Technology (MIT):

- A bachelor's degree (AQF Level 7) in a related field or equivalent from an accredited Australian Higher Education Provider or equivalent overseas qualification, or
- A bachelor's honours degree, Graduate Certificate, or Graduate Diploma in a related field (AQF Level 8) or above from an accredited Australian Higher Education Provider or equivalent overseas qualification.

For entry to the Master of Business Administration (MBA):

- A bachelor's degree (AQF Level 7) in a related field or equivalent from an accredited Australian Higher Education Provider or equivalent overseas qualification, or
- A bachelor honours degree, Graduate Certificate or Graduate Diploma (AQF Level 8) in a related field or above from an accredited Australian Higher Education Provider, or equivalent overseas qualification.

ENGLISH REQUIREMENTS

For the BSW:

- Minimum IELTS (Academic Module): Minimum score of 7.0 or higher in each component (Listening, Reading, Writing, and Speaking), or equivalent, upon application.

For the BIT, BBUS and Undergraduate Certificates:

- Minimum IELTS (Academic Module): 6.0 overall with no band less than 5.5, or equivalent, upon application.

For the MSW, GDHCS, GCHCS:

- Minimum IELTS (Academic Module): 7 overall with no band less than 7 or equivalent.

For the MIT, GDIT, GCIT, MBA, GDBA, and GCBA:

- Minimum IELTS (Academic Module): 6.5 overall with a writing score of 6.0 or equivalent.

* All applicants must be 18 years old prior to course commencement.

* Meeting the minimum entry requirements does not guarantee a place in the course for which you have applied.



Sydney Met

EDUCATION
FOR CHANGE

FOR MORE INFORMATION



432 - 434 Kent Street, Sydney, NSW 2000, AUSTRALIA



marketing@sydney.edu.au
info@sydney.edu.au



www.sydney.edu.au

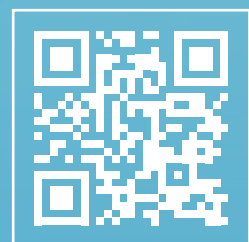
FOLLOW US



facebook.com/SydneyMet



instagram.com/sydney.edu.au



CRICOS Provider Code 03906M | PROVIDER ID PRV14280

Copyright 2024 © Sydney Met. All Rights Reserved